

Fig. 1: Presepsin values in controls, patients with SIRS, sepsis (low grade) and severe sepsis/septic shock at admission

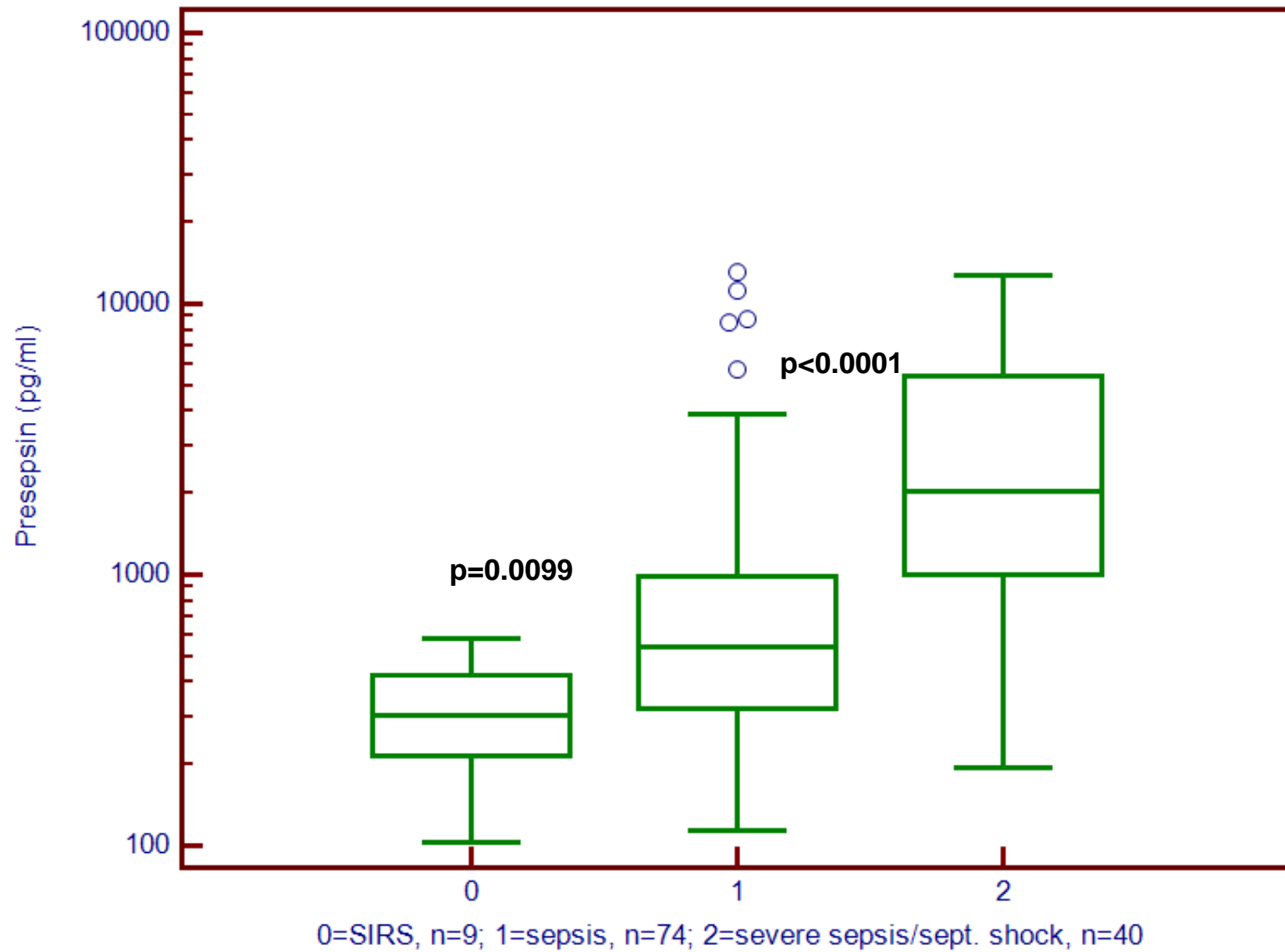


Fig. 2: Presepsin values in patients with SIRS, sepsis (low grade) and severe sepsis/septic shock at admission

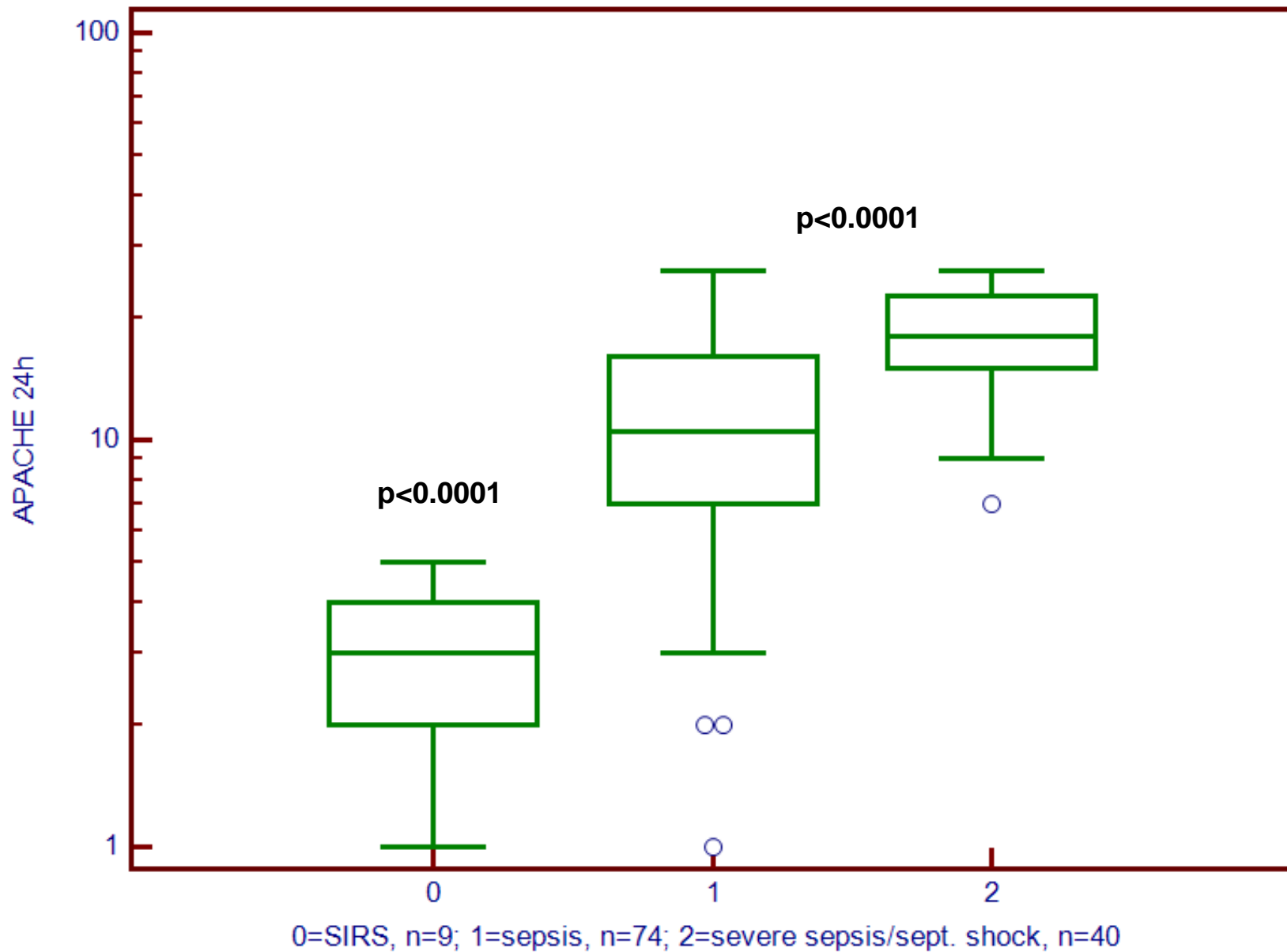
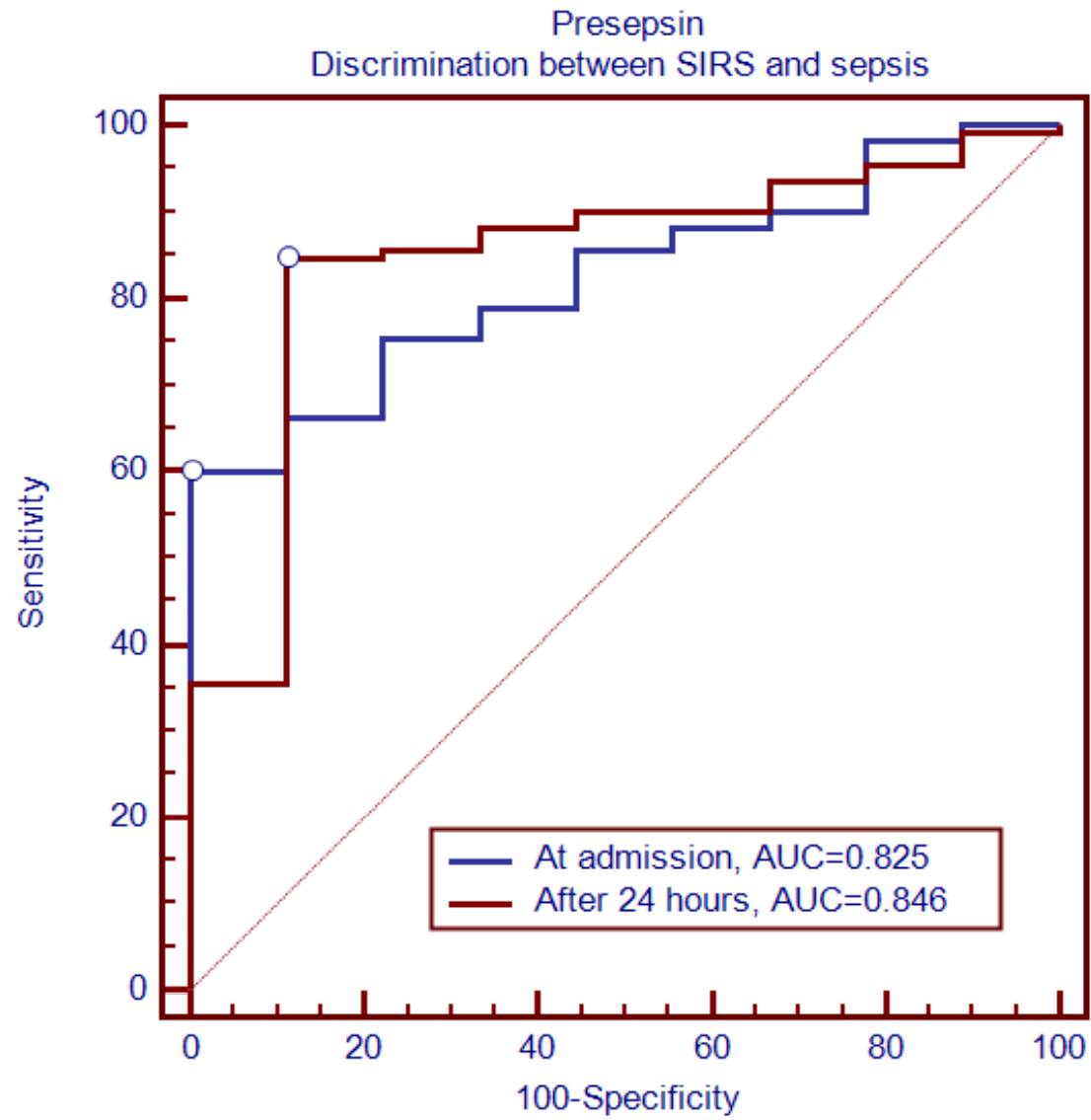


Fig. 3: APACHE II score in patients with SIRS, sepsis (low grade) and severe sepsis/septic shock 24 hours after admission

Fig. 4:



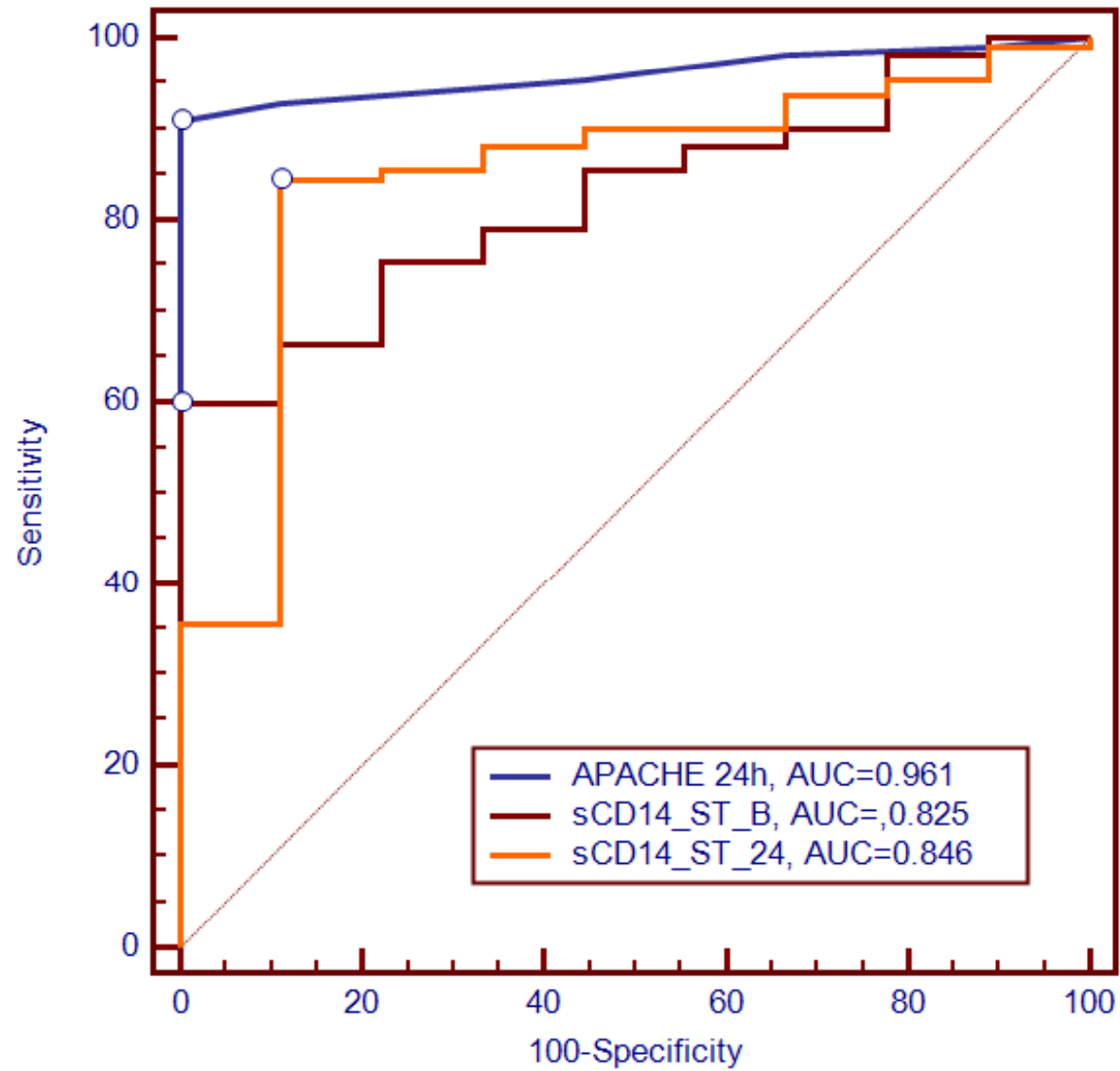
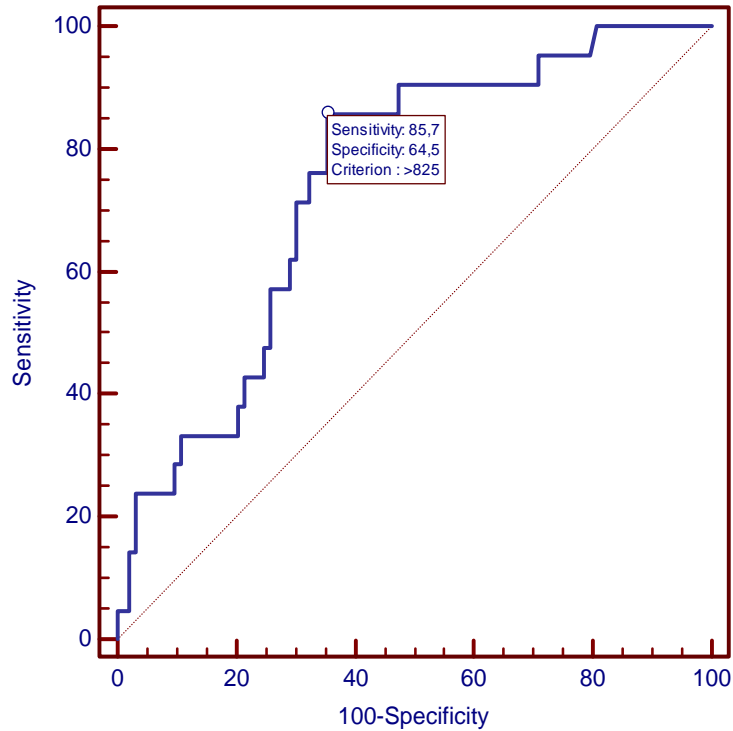


Fig. 4: ROC analysis of presepsin for discrimination between SIRS and sepsis

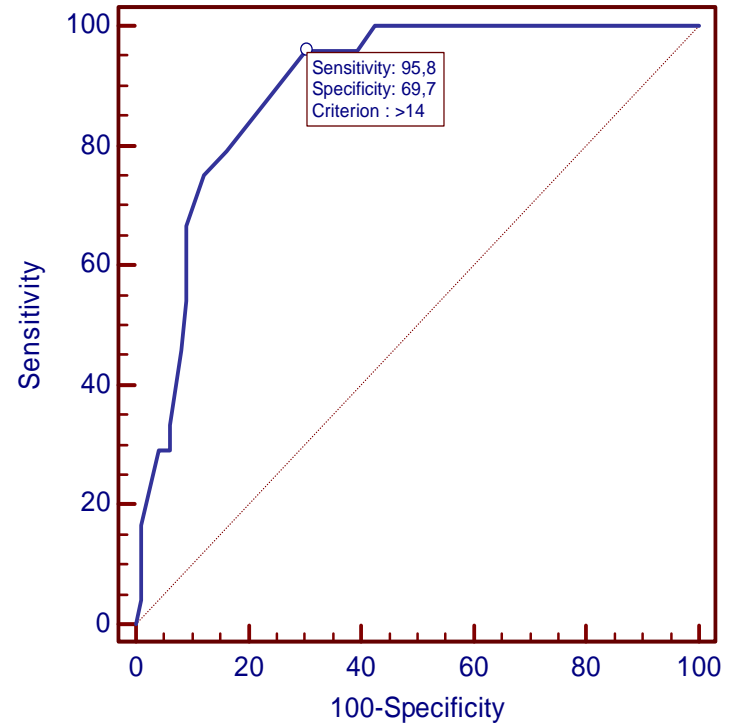
Fig. 5: ROC curves for discrimination between survivors and non-suvivors (30-day death)

Presepsin 8 hours after admission
AUC = 0.743



Cutoff (pg/ml)	SENS (%)	SPEC (%)
500	91	50
825*	86	65
1000	76	68

APACHE II score 24 hours after admission
AUC = 0.895



Cutoff	SENS (%)	SPEC (%)
14	96	70

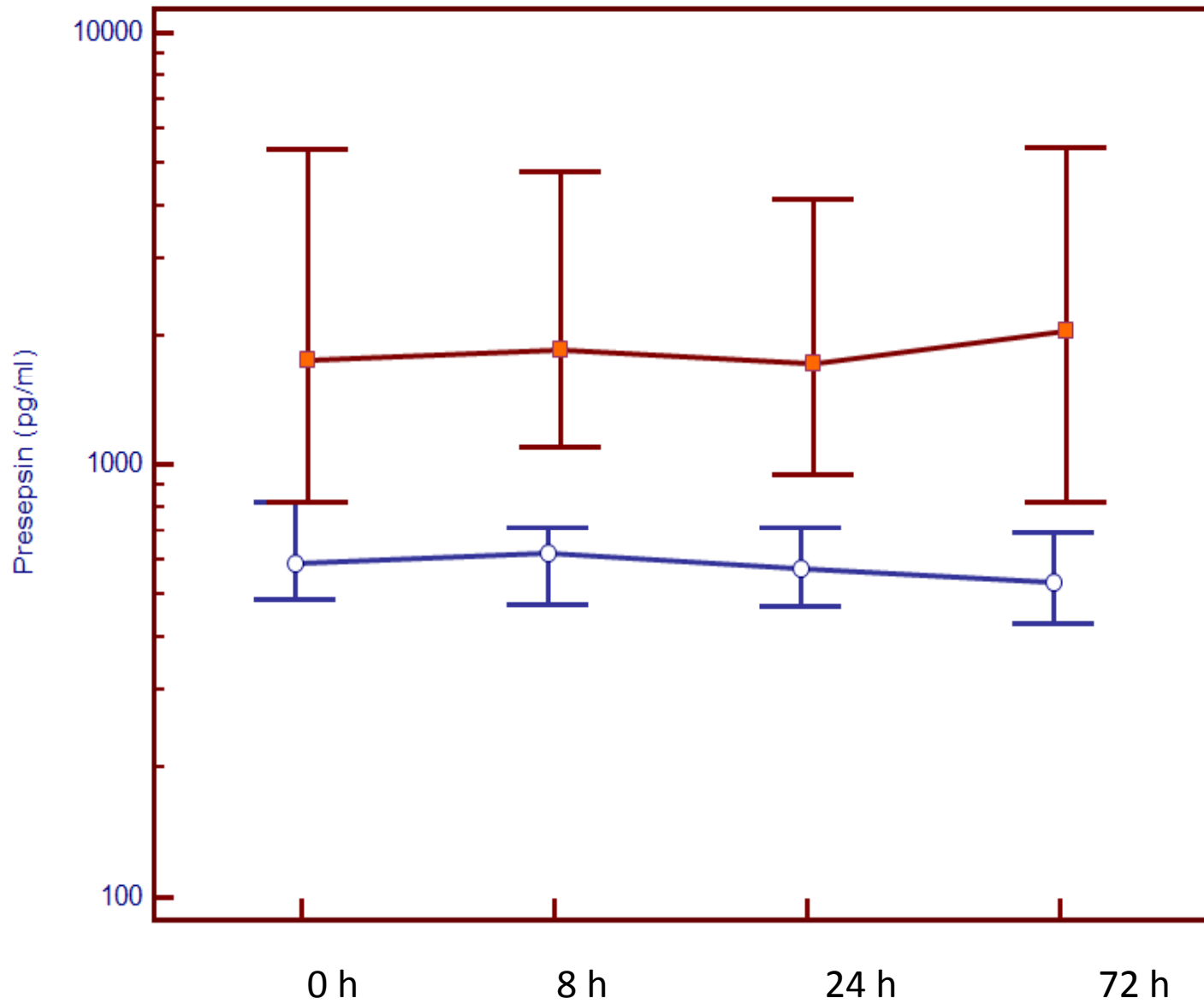


Fig.6: Presepsin in the course of the disease
red: non-survivors; blue: survivors

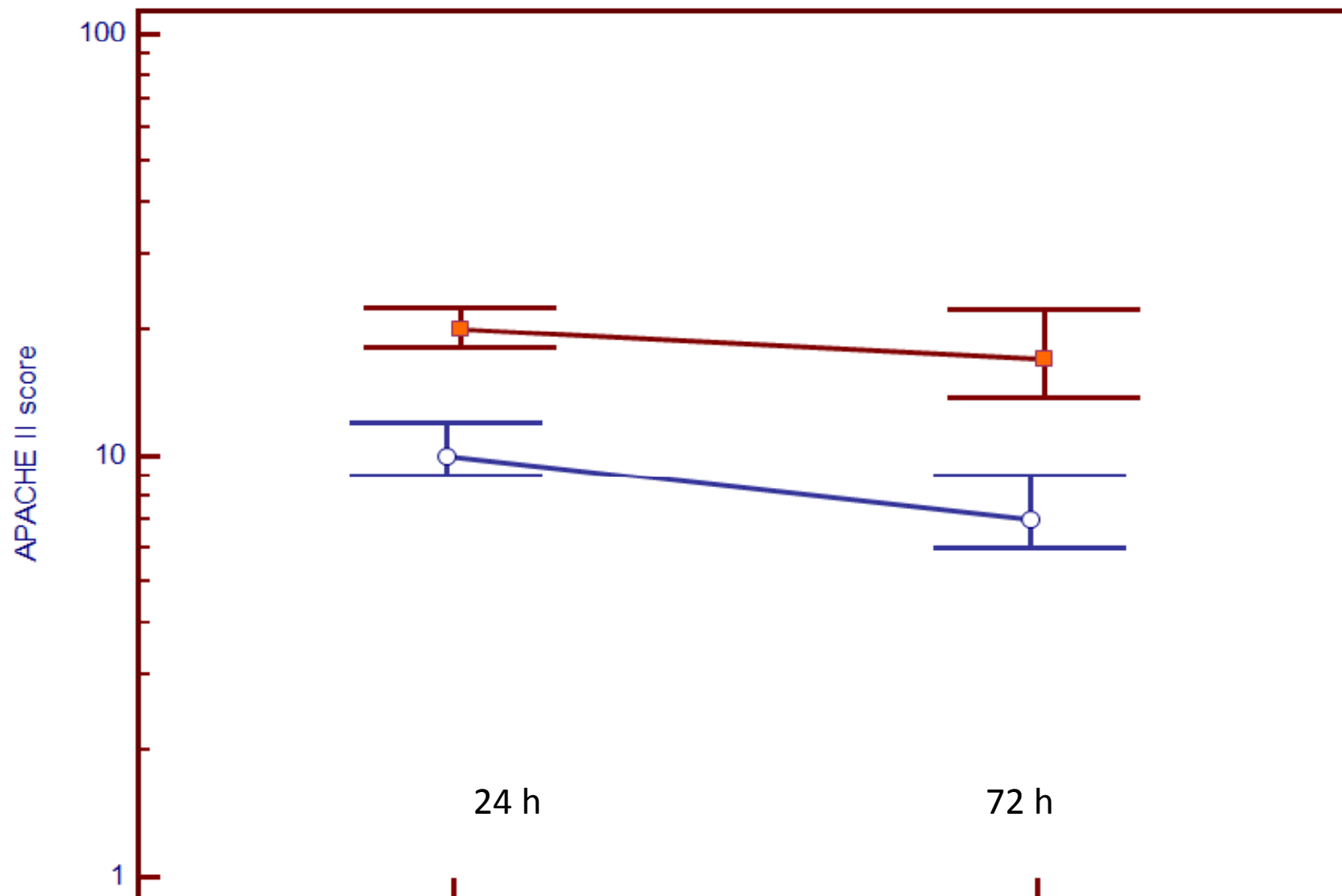


Fig. 7: APACHE II score in the course of the disease
red: non-survivors; blue: survivors

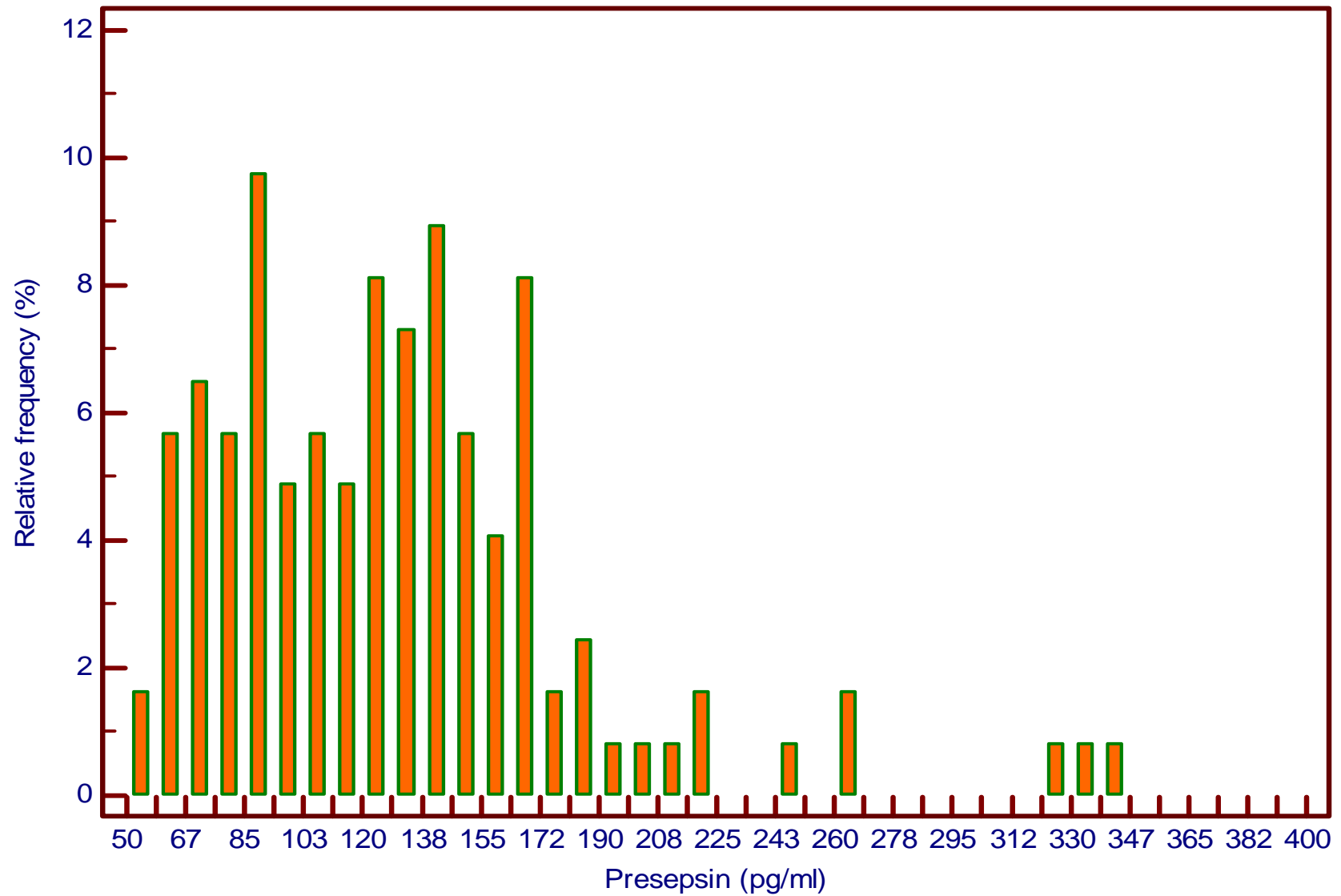


Fig. 8: Distribution of presepsin concentration in the healthy control group

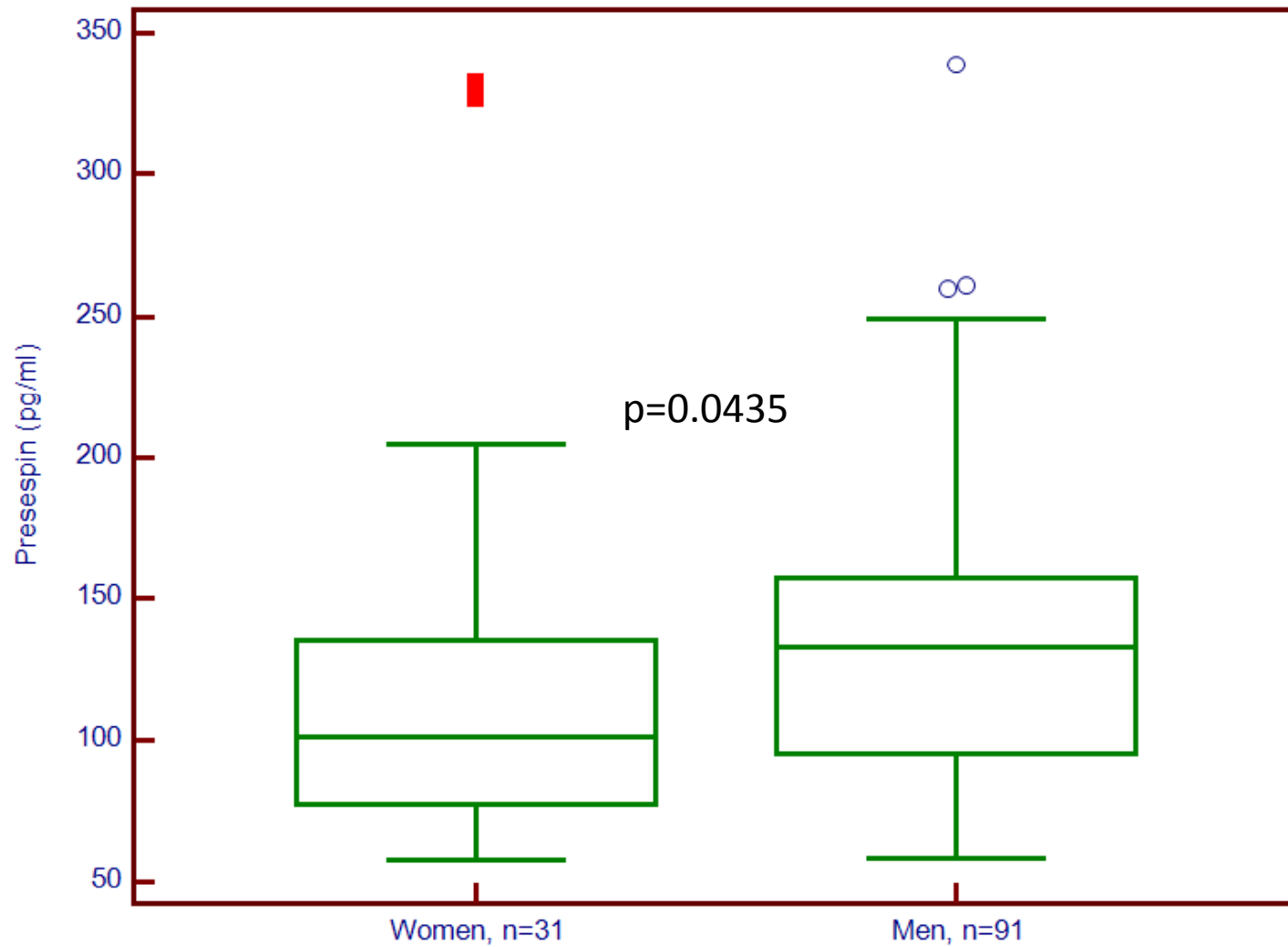


Fig.9: Presepsin concentration in men and women of the healthy control group

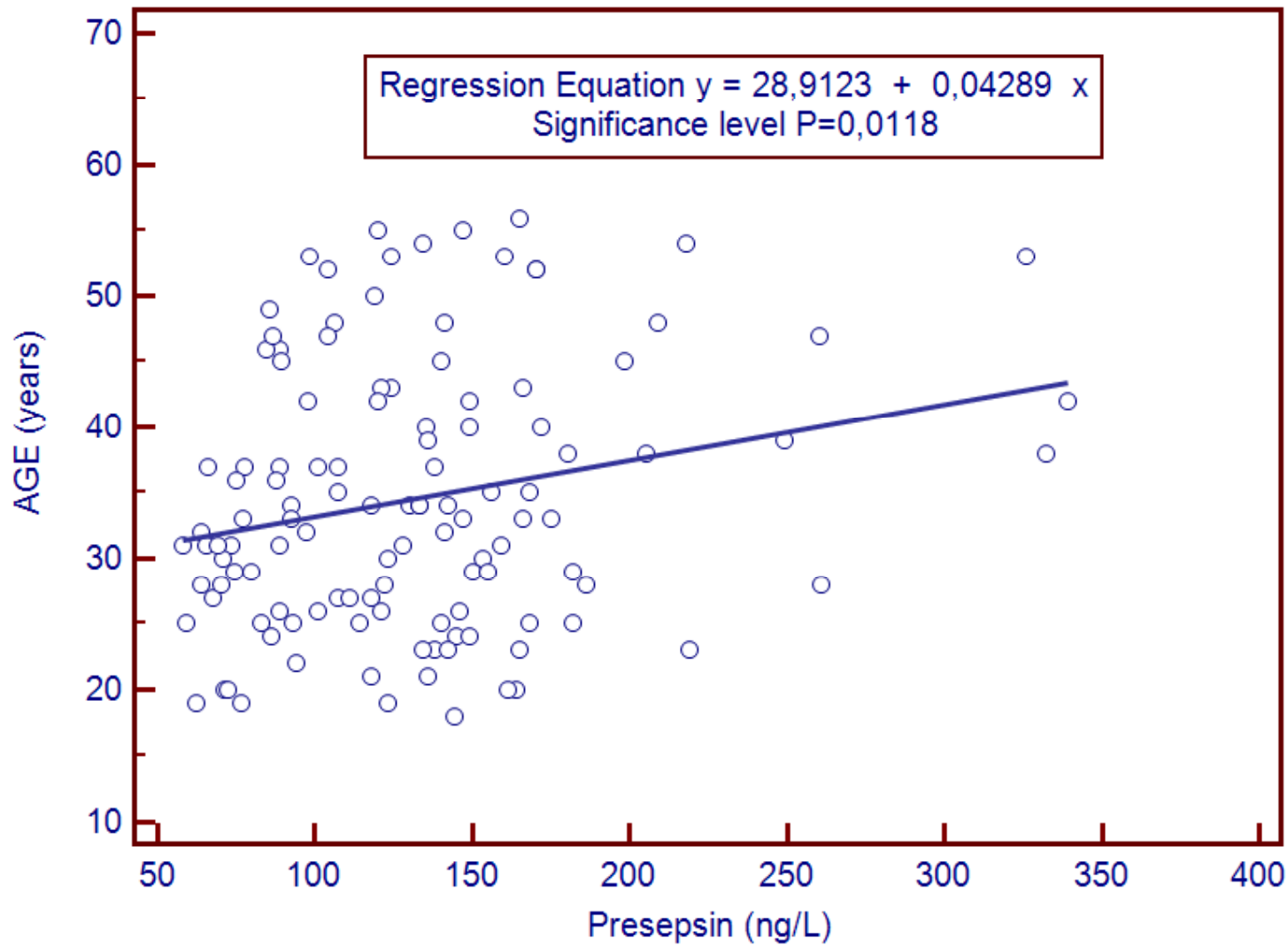


Fig. 10: Age dependency of presepsin in the healthy control group

Risk stratification and mortality prediction by presepsin at presentation

Results of the clinical study Dr. Carpio

