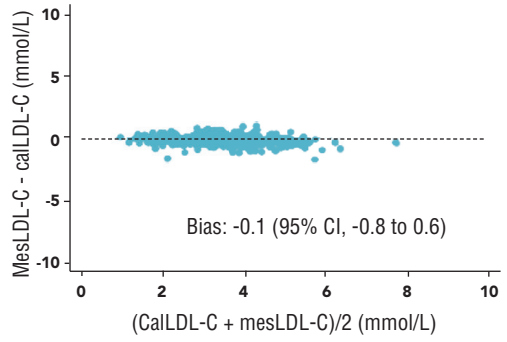
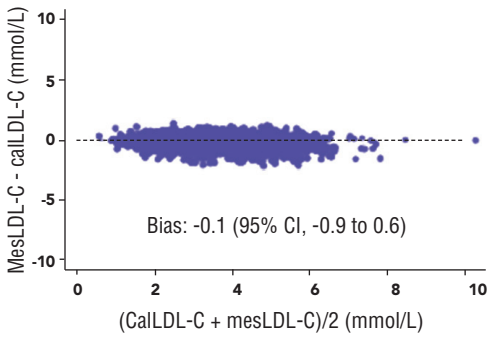
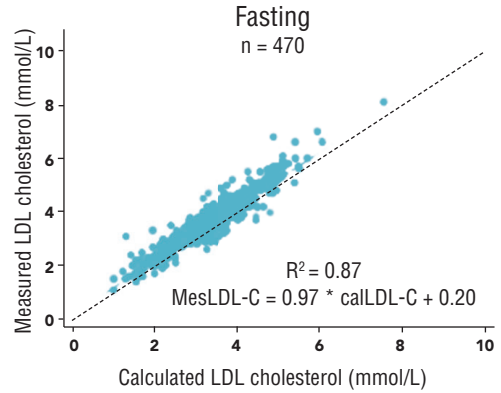
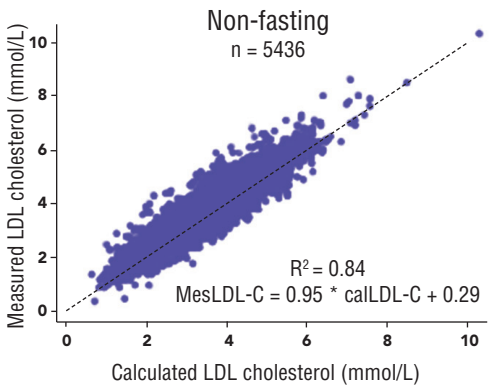


F1

Comparison of Friedewald estimated LDL-C and measured LDL-C (homogeneous direct method) in samples from fasting and non-fasting subjects.



Source: Nordestgaard BG, Langsted A, Mora S, et al. Fasting is not routinely required for determination of a lipid profile: Clinical and laboratory implications including flagging at desirable concentration cutpoints—a joint consensus statement from the European Atherosclerosis Society and European Federation of Clinical Chemistry and Laboratory Medicine. Clin Chem 2016;62:930-46.