

The Chief Operating Officer's View on Staffing for POCT

Michael J. Hill

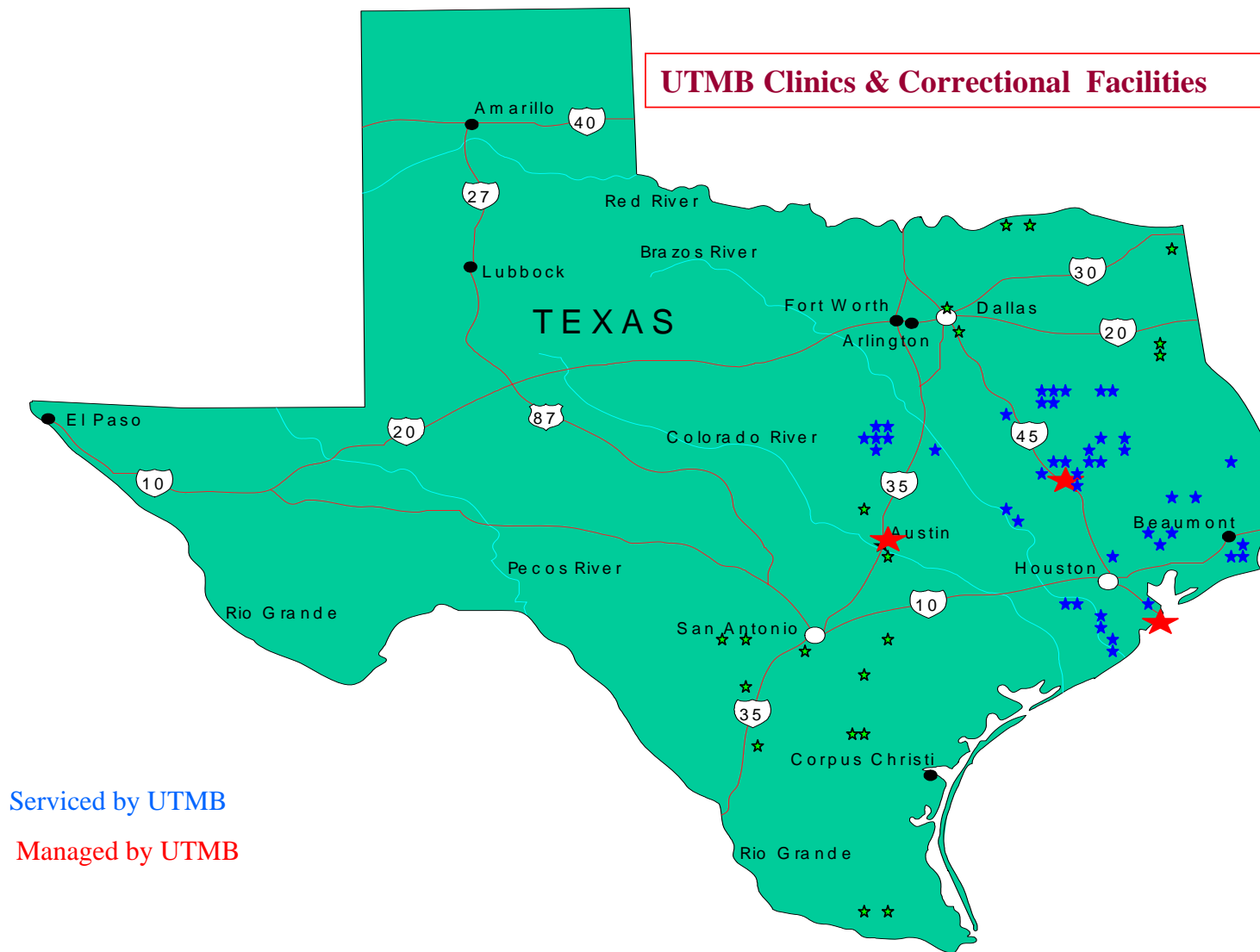
*Executive Director, UTMB Hospitals, Galveston,
TX*

Objectives

- Understand the Chief Operating Officer's view on the impact of POCT on patient care and effectiveness of the hospital
- Developing benchmarks for justifying POCT resources (focus on FTE'S)

Established in 1891, The University of Texas Medical Branch at Galveston is the oldest of the four health sciences centers in the UT System. Located on a barrier island bordering the Gulf Coast, the 85-acre main campus includes a complex of six hospitals, a Level I Trauma Center, an extensive network of regional maternal and community clinics, four academic schools, numerous research centers and institutes, and one of the largest medical libraries in the Southwest.

Scope of Point of Care Testing in the UTMB Health System



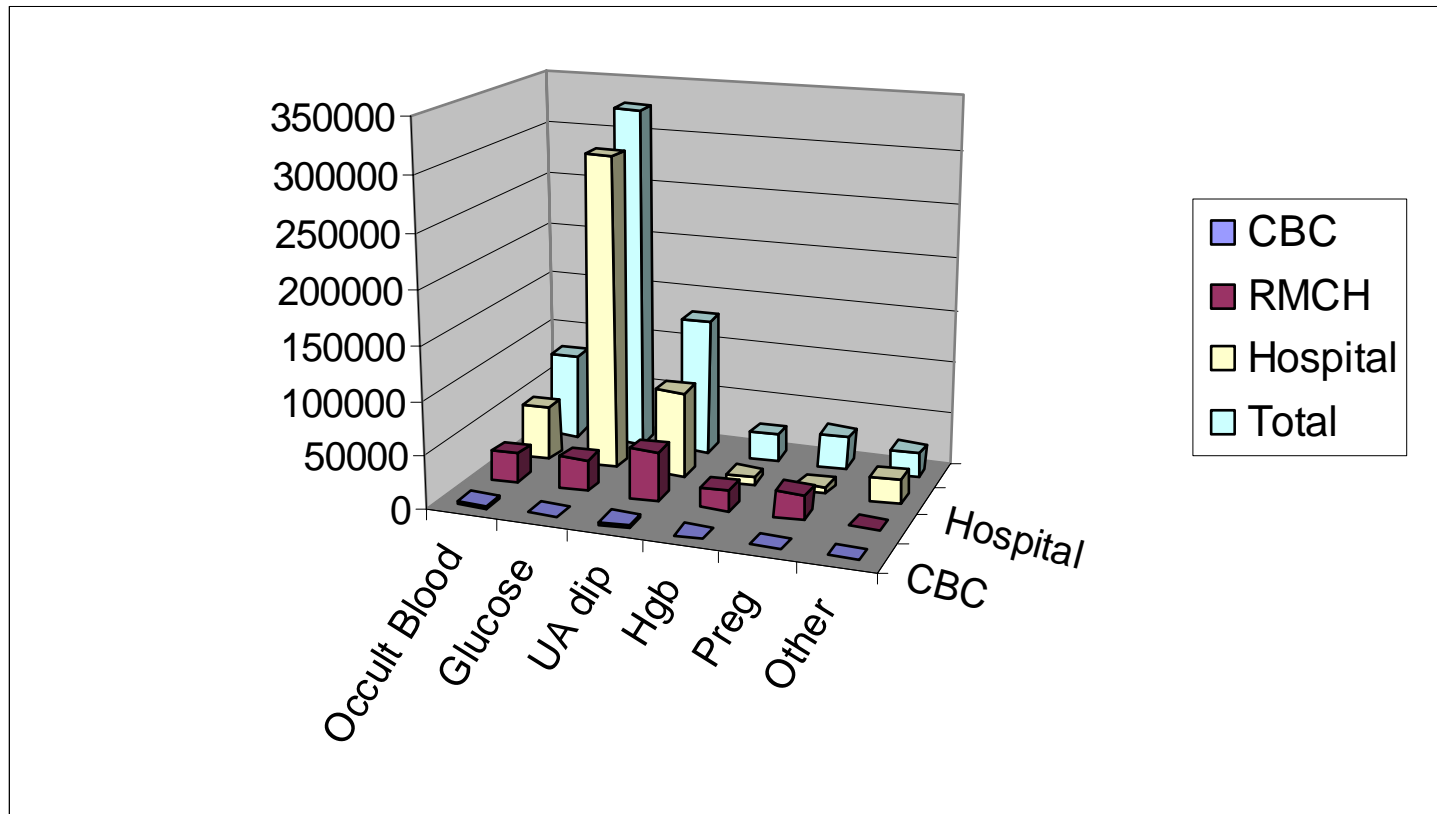
Serviced by UTMB

Managed by UTMB

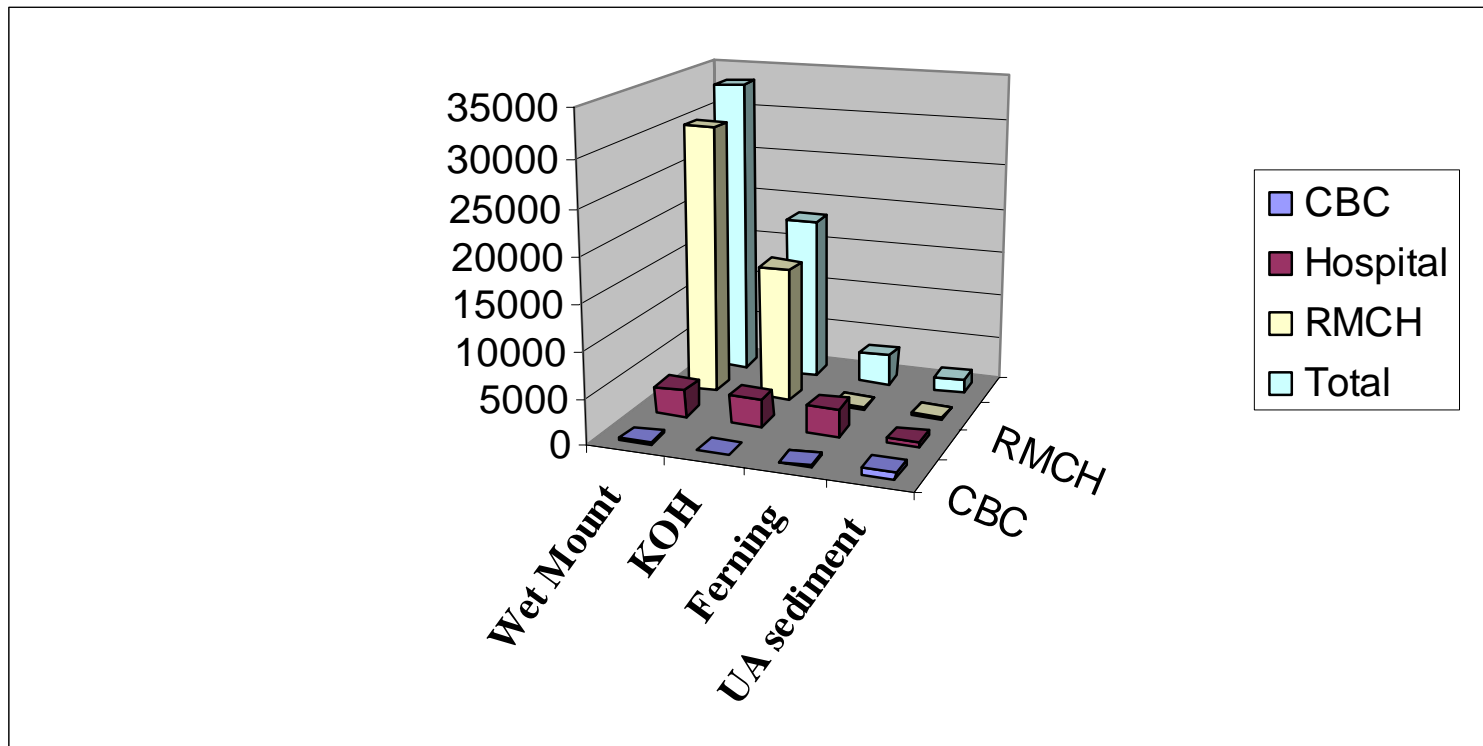
University of Texas Medical Branch, Galveston, Texas



Waived POCT at UTMB



Provider Performed Microscopy at UTMB



Position Justification

Develop Benchmark (Unit of Service)

- Work with administration to agree on unit of service measurement
- Perform Time Studies: Provide time studies required for performing defined task
- Impact of POCT on patient's satisfaction, length of stay and turn around time
- Other variables to consider in determining staffing for POCT management: **next slide**

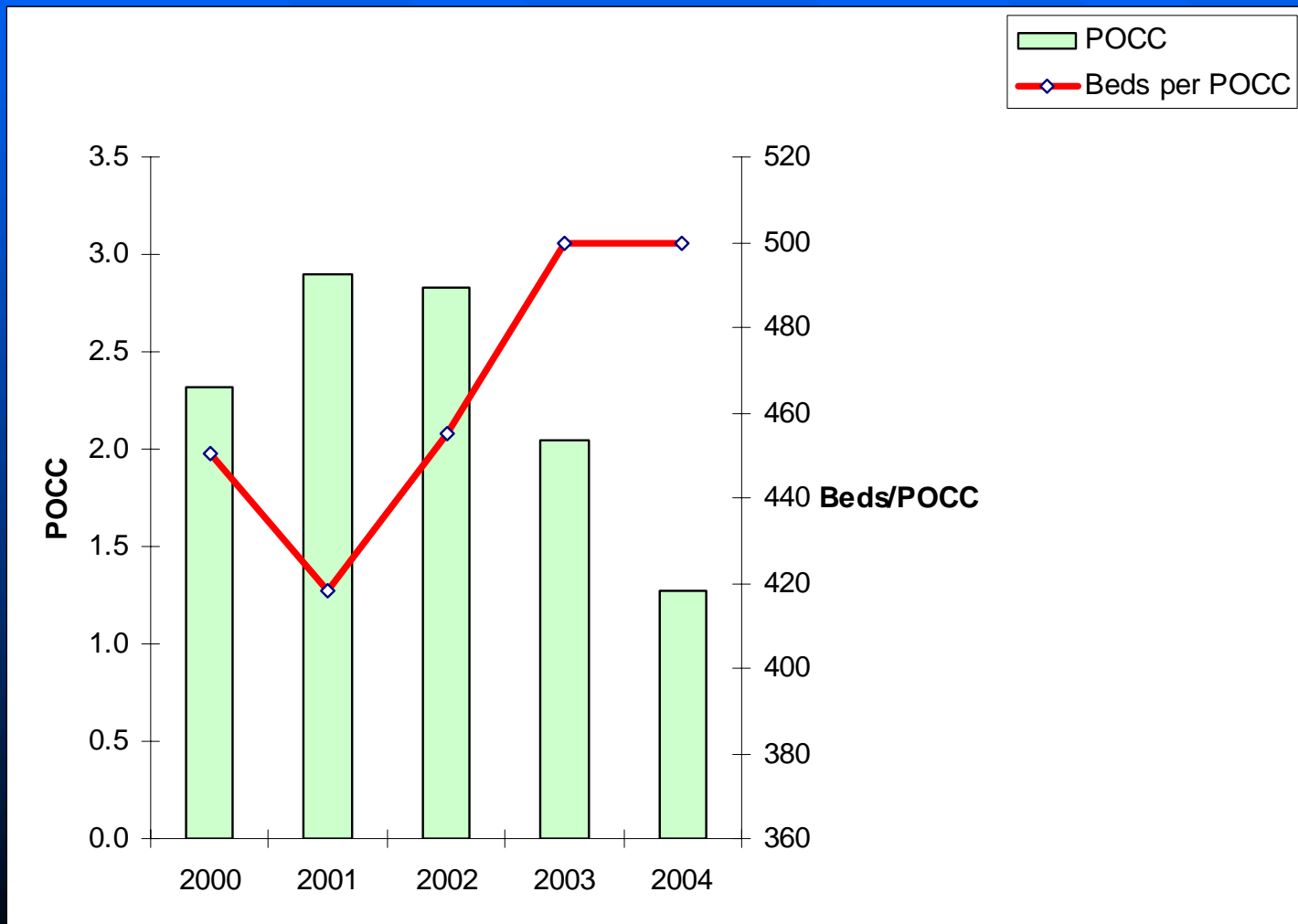
Variables in Staffing for POCT

- Number of POCT operators
- Hospital size and distribution of testing sites
- Number of admissions and OP visits
- Number of CLIA certificates
- Number of different tests and test volumes
- Availability of connectivity

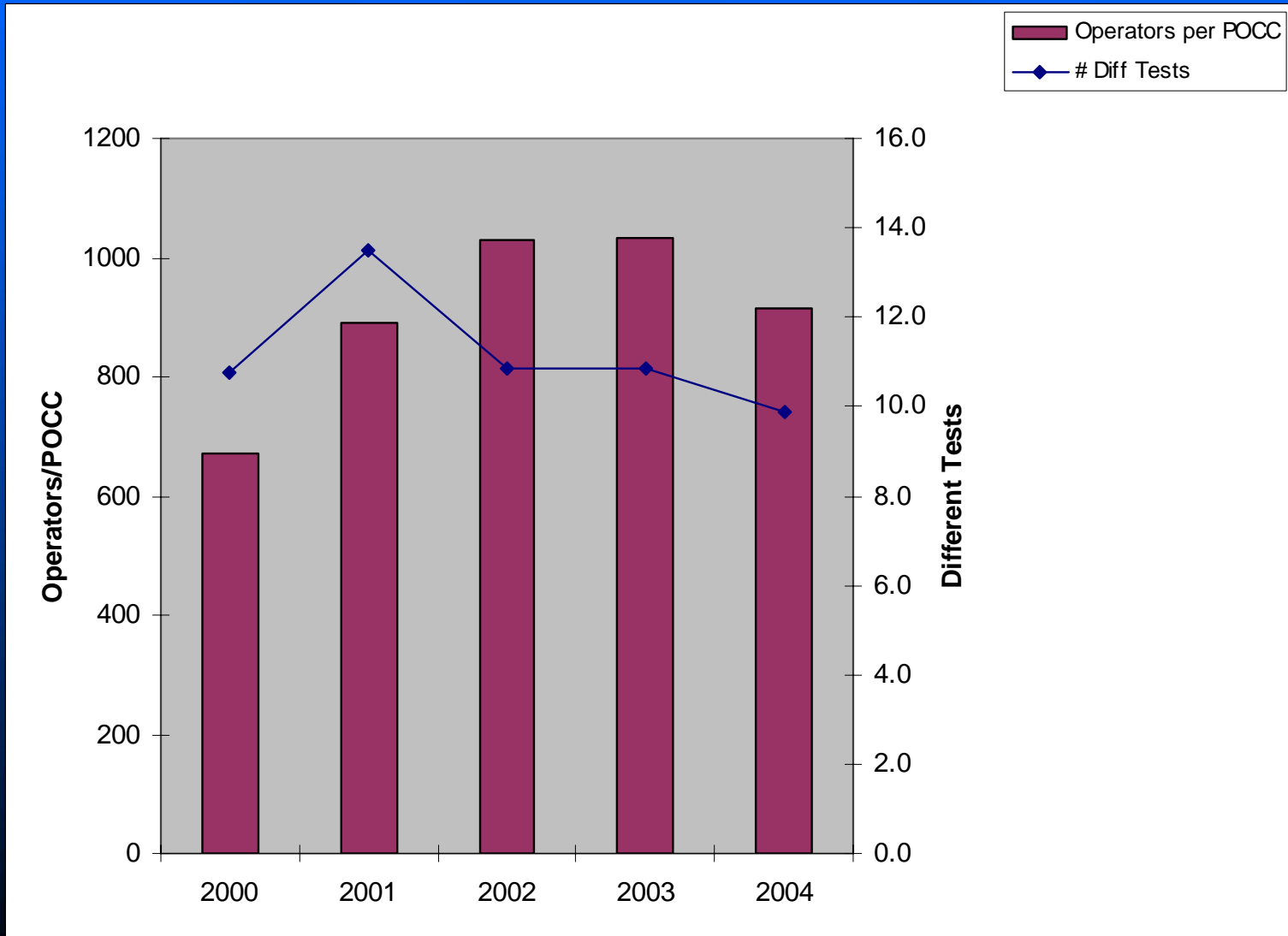
Review of Peer Data

2000 - 2004

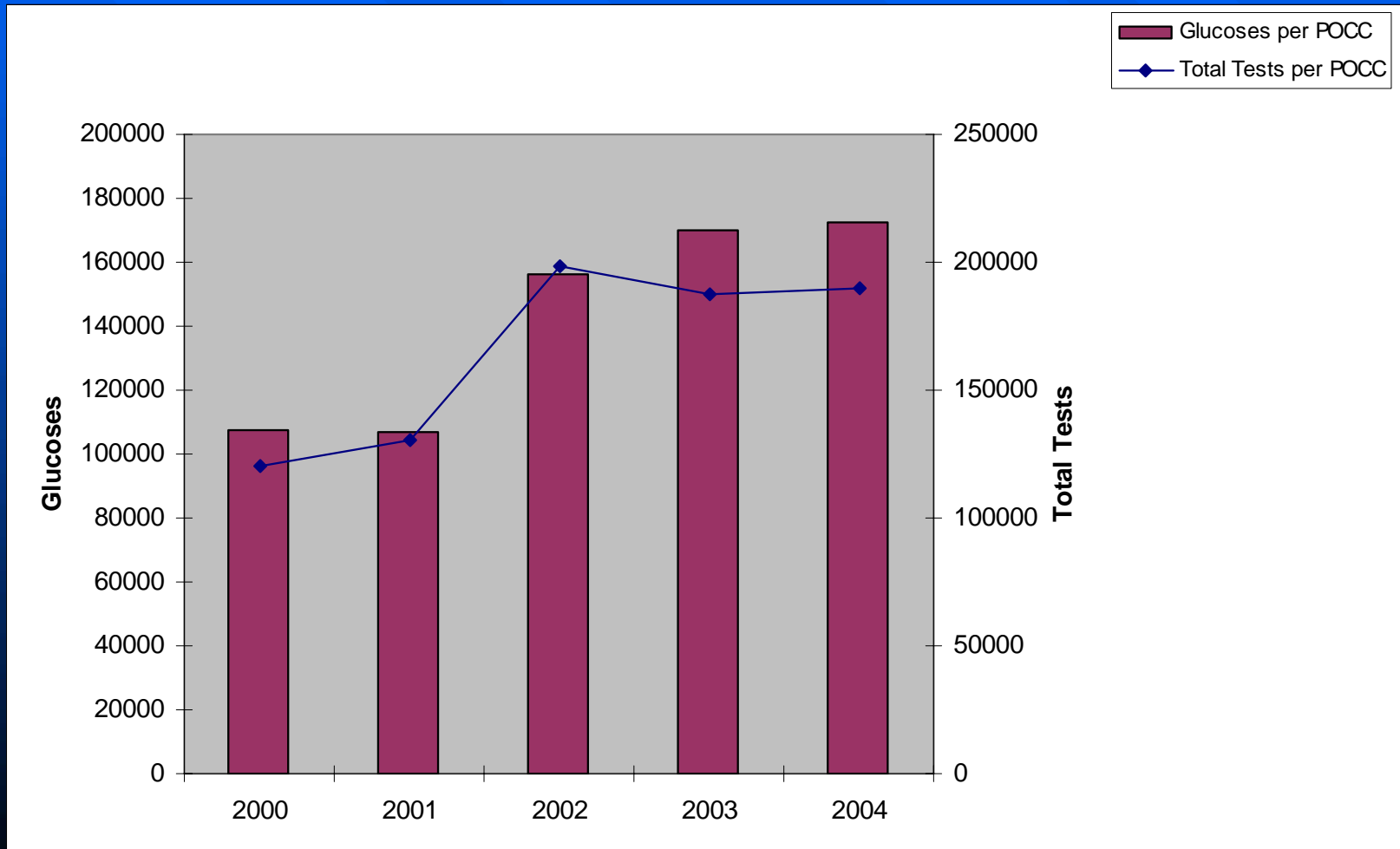
Average Number of POCC Coordinators and Hospital Beds per POCC Coordinator



Number of Operators per Coordinator and Tests Performed



Glucoses per POCC and Total POC Tests per POCC



Conclusion

The background of the slide features a series of parallel, diagonal stripes in a medium blue color, running from the top-left towards the bottom-right. The stripes are evenly spaced and cover the entire area of the slide.